

Biometric Attendance System: Windows Client Application Installation 1.7.0.2 Guide

Notification:

1. Must have Admin rights of your computer account for this installation.
2. You must remove all file of AEBAS Application before 1.7.0.1 version (Remove C:\fingerPrintSensors folder & shortcut).
3. This setup Common for 32 bit and 64 bit operating System.
4. Must have Microsoft framework 4.0 or above on your System.

Salient features:

1. This desktop client application version implemented with automatic updater.
2. GPS enabled to get device location, so please turn on the system location before start the AEBAS application.
3. This application will not allow repeating attendance of same employee otherwise system will hold attendance for 20 seconds.
4. AEBAS Version 1.7.0.2 can support on 32 and 64 bit operating systems.

BAS Desktop Devices:



Startek
FM220 – ACPL



Secugen
HAMSTER PRO 20



Mantra
MANTRA MFS 100



Morpho
MSO 1300E2 (SAFRON)



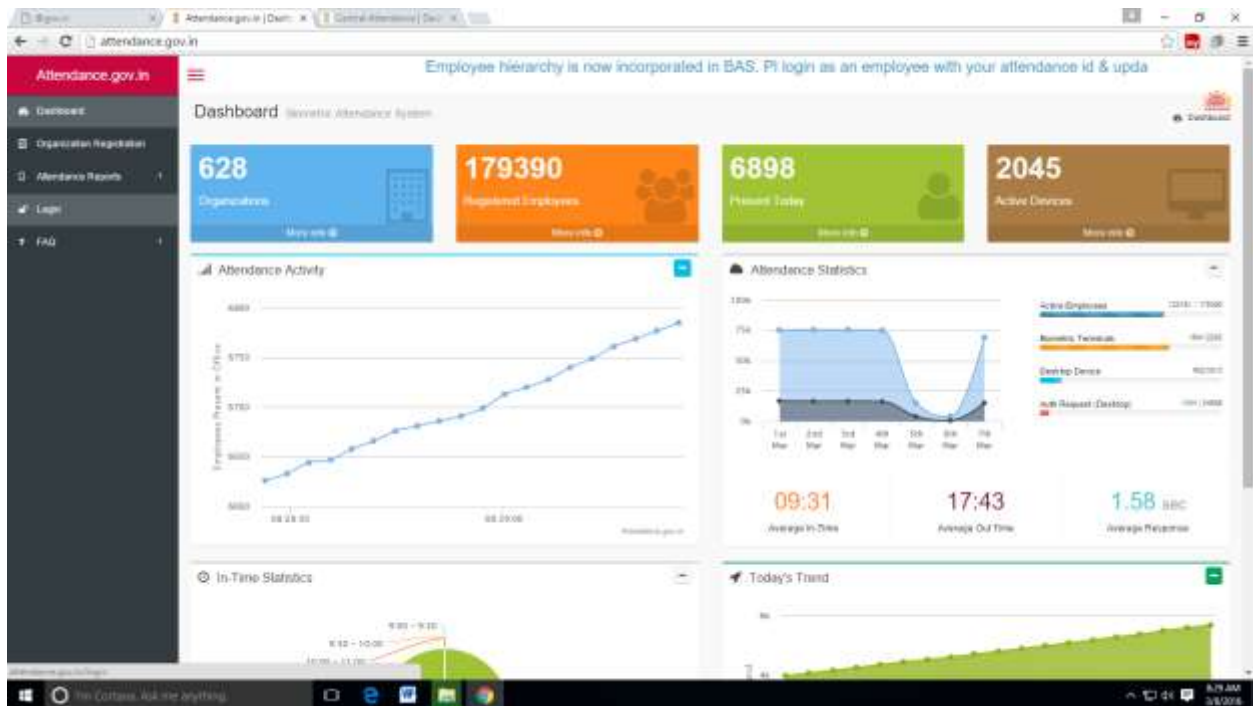
Precision
PB ABAS 300



IriShield-USB
MK 2120U

Steps for installation AEBAS Desktop application version 1.7.0.2

Go to your organization domain like- attendance.gov.in



Now login in your organization portal with the username & password (Nodal officer of organization have Username & password)

The screenshot shows the "Login to BAS" page on Attendance.gov.in. The page includes a navigation menu on the left and a main content area with a login form and instructions.

Login Form:

- Fields for "REG_ID" and "PASSWORD".
- A "Forgot Password" link.
- A "Don't have an account? Click here" link.
- A green "Sign in" button.

Instructions for using Login:

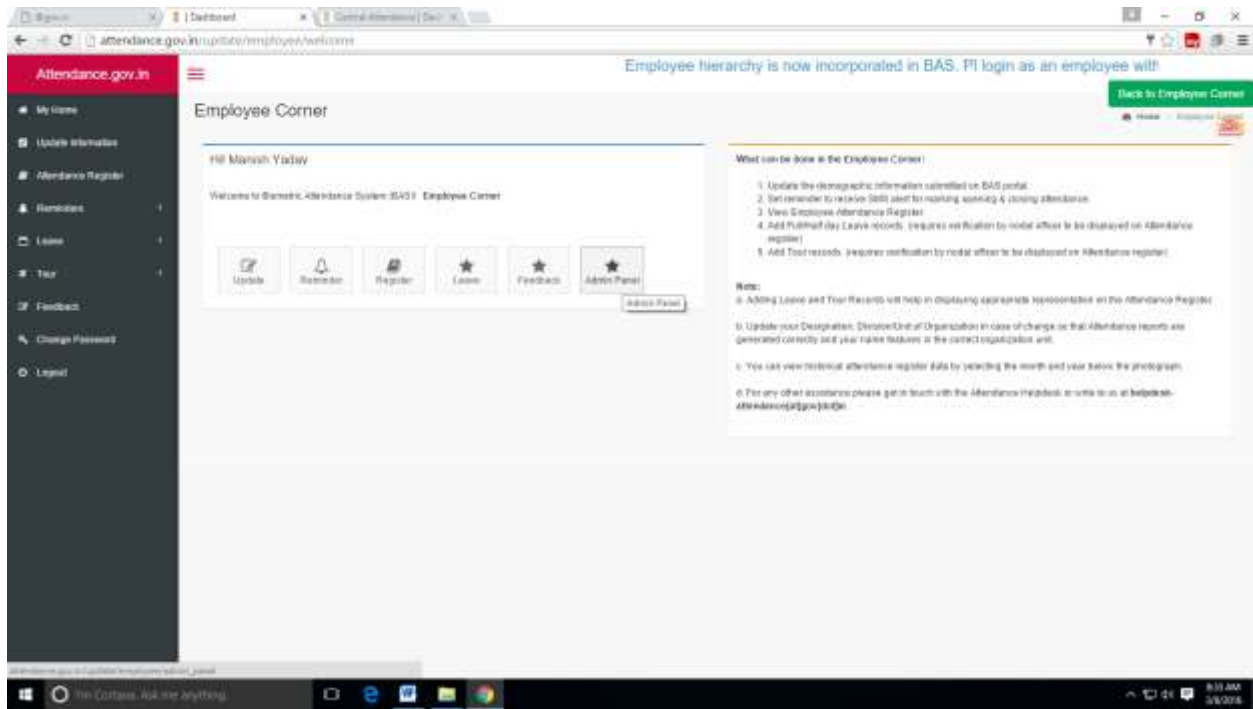
- To access the Employee console, you can login using the 6 digit Attendance/Registration ID.
- Please follow the steps provided to get an account:
 - Click on the Don't have an account? Click here
 - Enter the 6 digit Attendance/Registration ID
 - Enter Captcha code as displayed in image
 - Generate OTP to sign in to employee console
- Once you create your account you can enter a password to regular usage, in case you forget the password you try to reset the password using the Forgot password link.
- Admin & Reporting officers can also login from here, and the system would welcome you to the Employee console and you can switch the view to the management console.

Note:

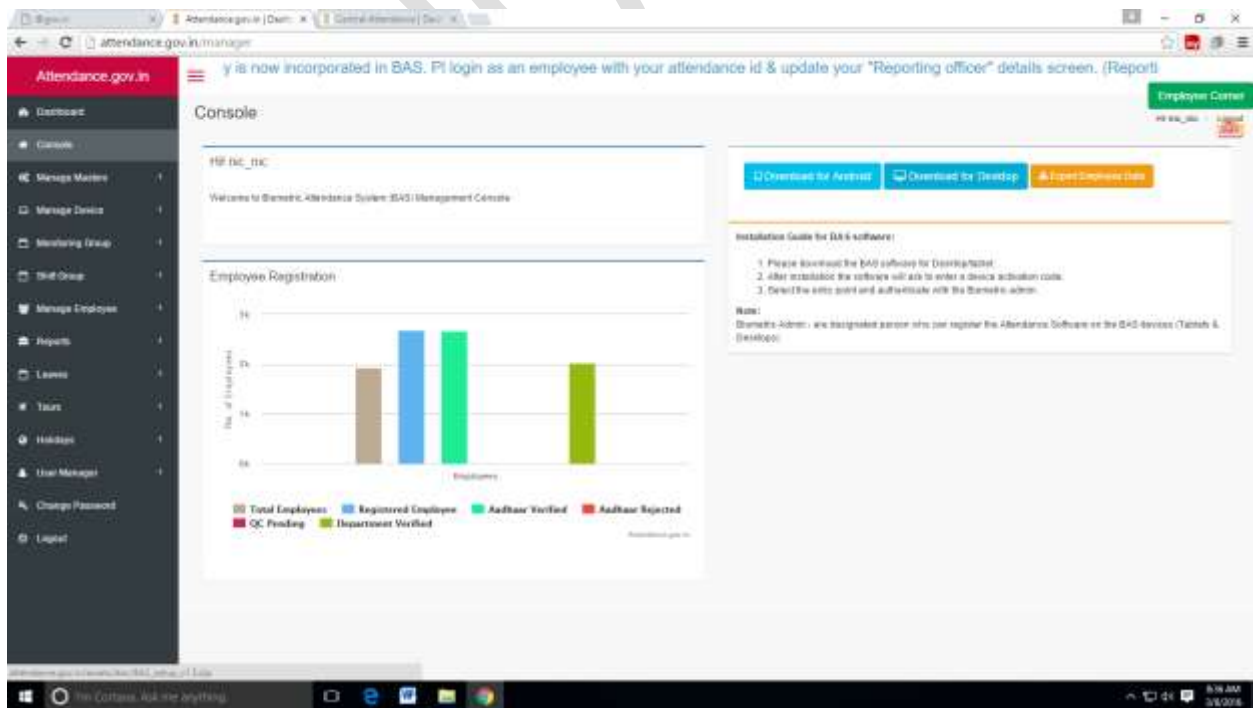
- If you have already generated an OTP which is valid, this OTP is now your password for login to BAS.
- For any other assistance please get in touch with the Attendance Helpline or write to us at helpdesk-attendance@spn3n.in.

A green "Don't have an account? Click here" button is located at the bottom of the instructions section. The Windows taskbar at the bottom shows the system clock as 8:12 AM on 3/3/2018.

After login in attendance portal click on admin panel.




Now click on "Console". In right hand side of your portal there is option of "Download of Android" & "Download for Desktop".



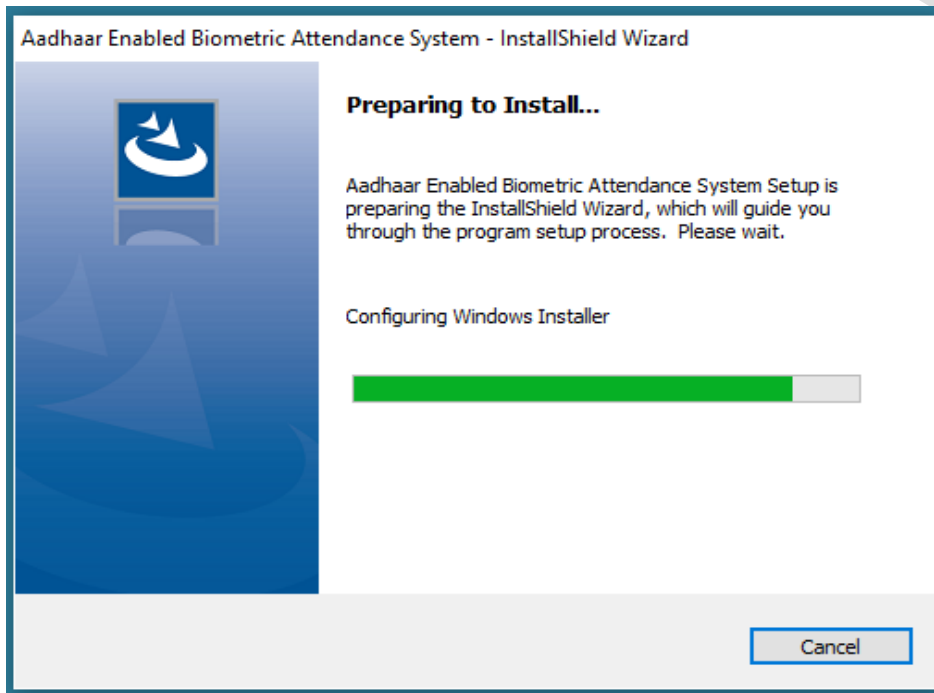
Now download the “**Download for Desktop**” & Extract it before the installation.

Open AEBAS Application 1.7.0.2 setup folder, Double-click on the **Setup** file show the image.

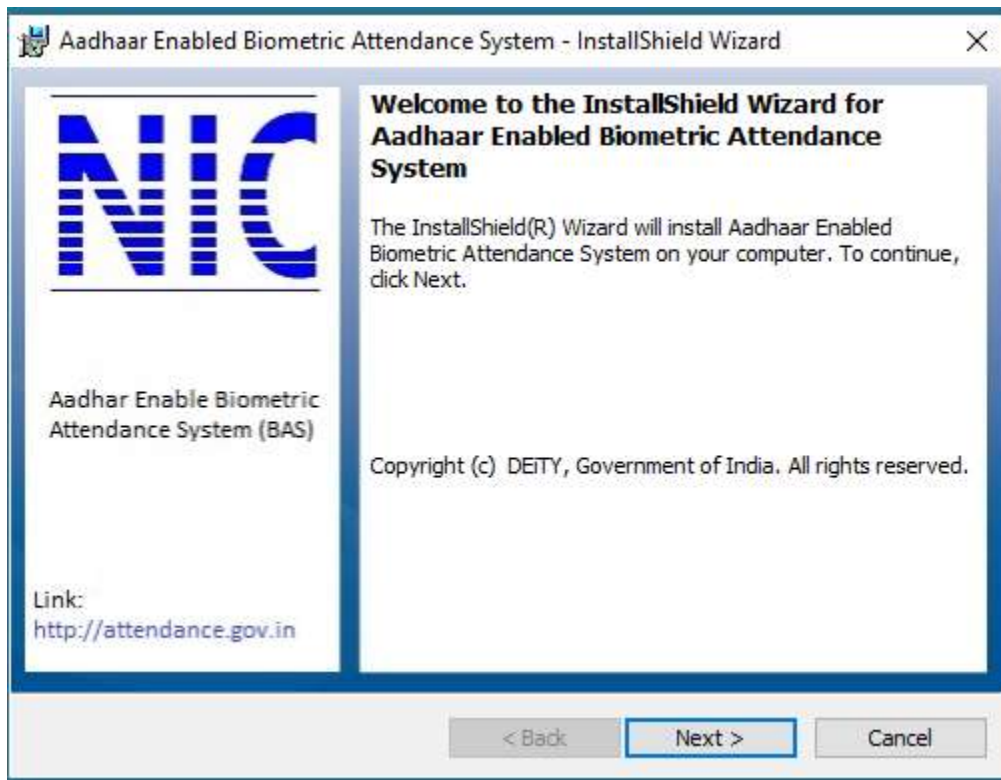
Name	Date modified	Type	Size
Data1	9/22/2016 10:00 AM	WinRAR archive	168,213 KB
Setup	9/22/2016 10:00 AM	Windows Installer ...	2,655 KB



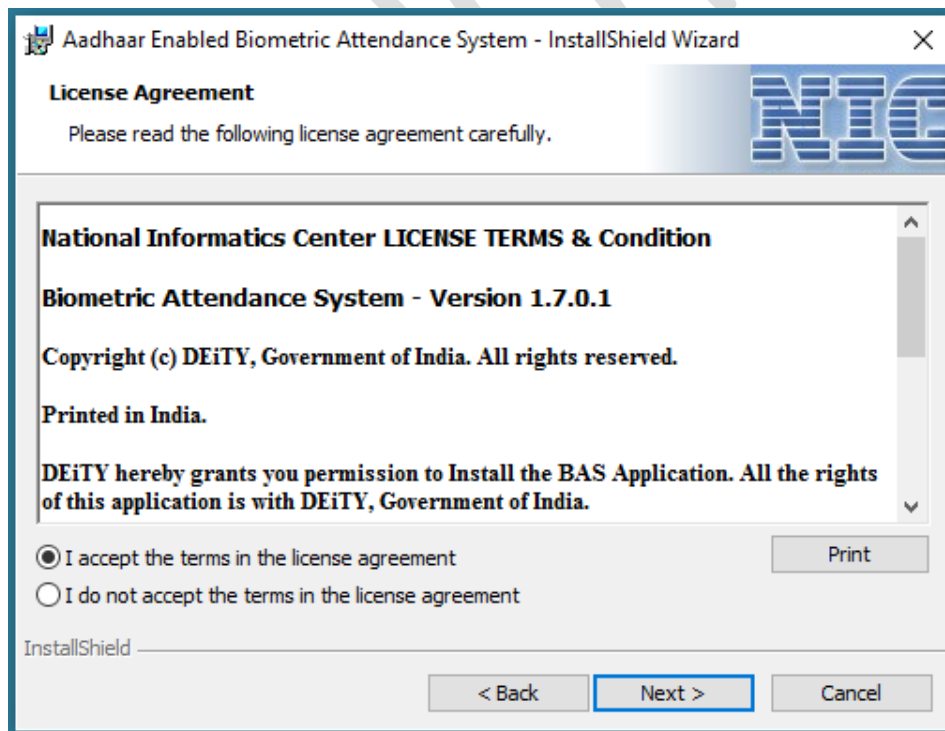
Click the Setup file and configure your system for AEBAS Application.



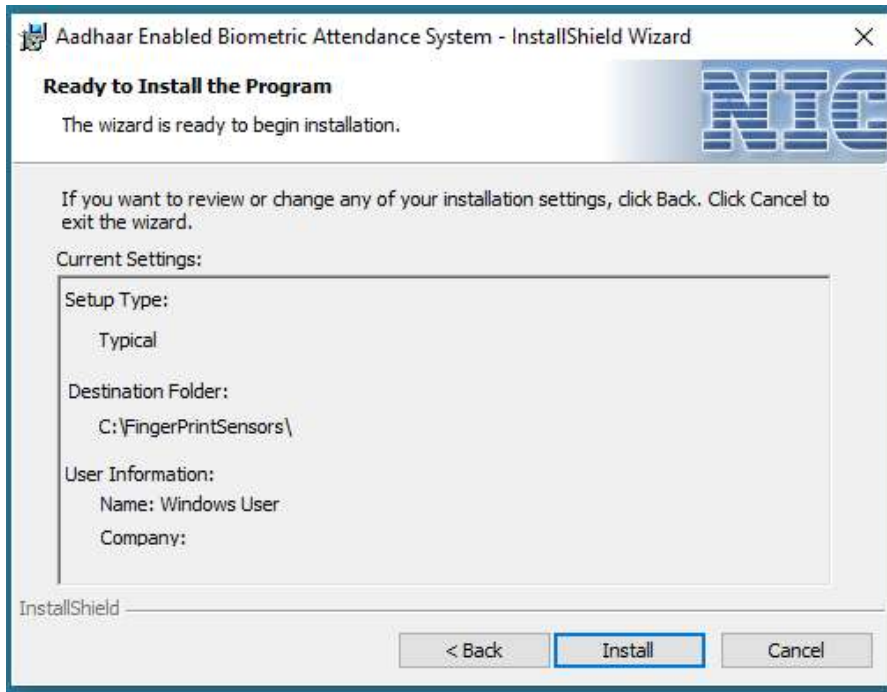
Open new window click next button



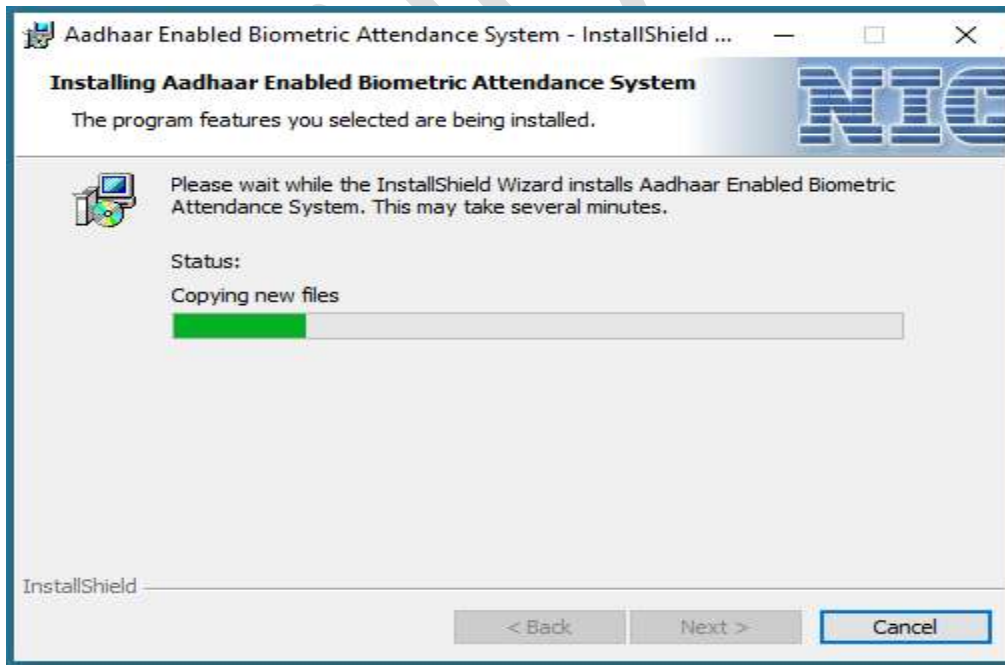
Accept License Agreement and click next button



Ready to install the program and click install button

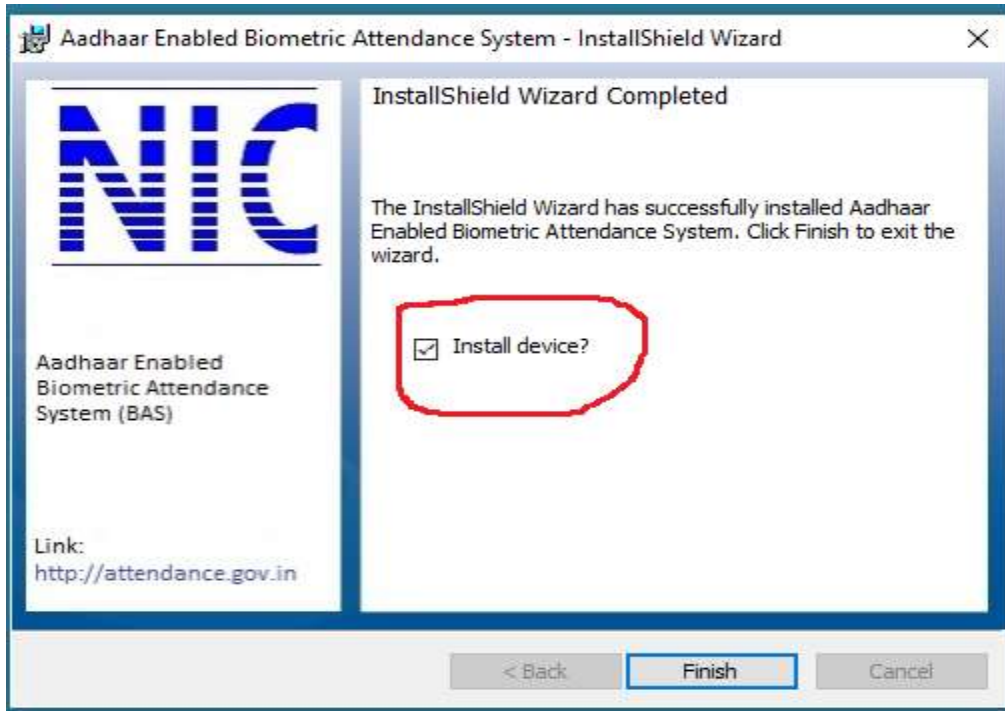


Installation of AEBAS application under process...

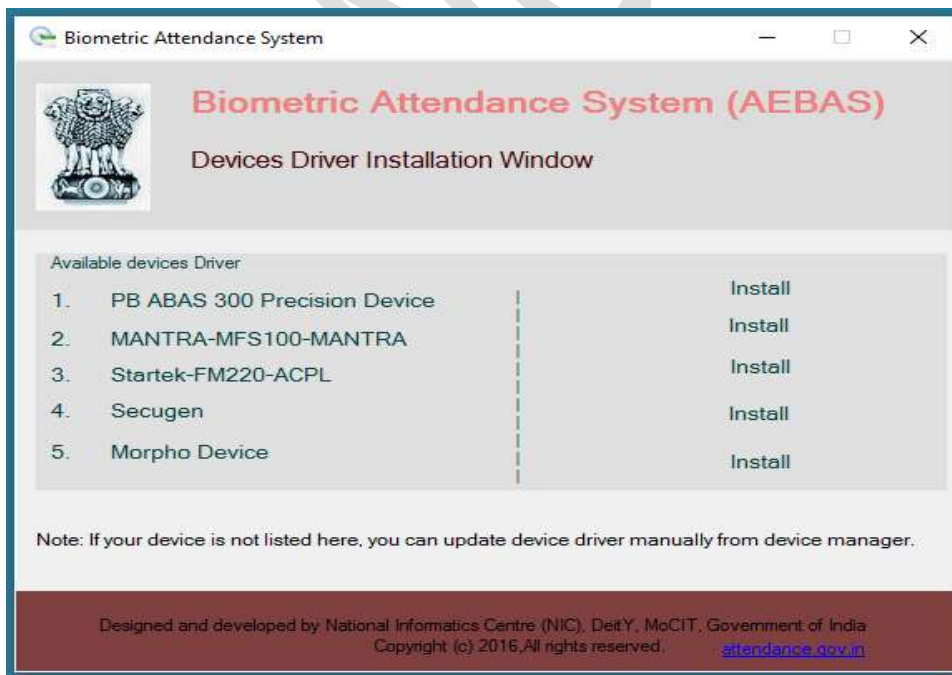


Application successfully installed in to your system.

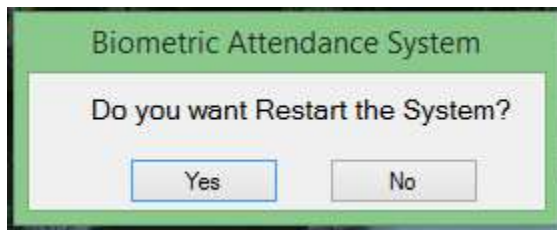
If you want to install device driver, please keep ticked the checkbox which showing under red line and click the finish button.



After click on finish button, please install the device driver by select your device type.



After install the device driver, Click on 'Yes' button to restart the system...



Now you can open the AEBAS Application from Desktop shortcut icon.

BAS Device Registration at Attendance Portal:

Log on to the Attendance Portal and generate the device activation code. To activate a device please ensure the following are added on the portal:

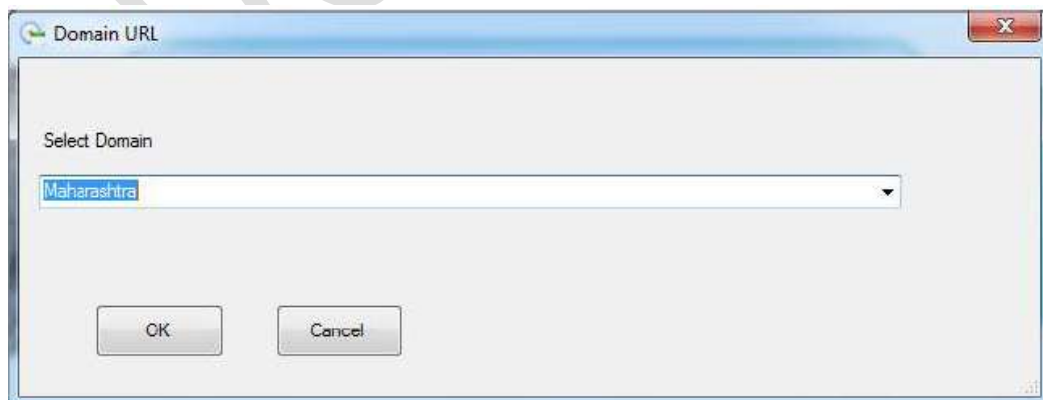
1. Office Location
2. Biometric Admin
3. Device Location
4. Activation Code
 - i. Generate Activation code by select Office Location as well as Biometric Admin (who will be authenticate device at device location).

Connect your biometric fingerprint/Iris device to your computer and then double click on the BAS icon on the desktop to launch the application.

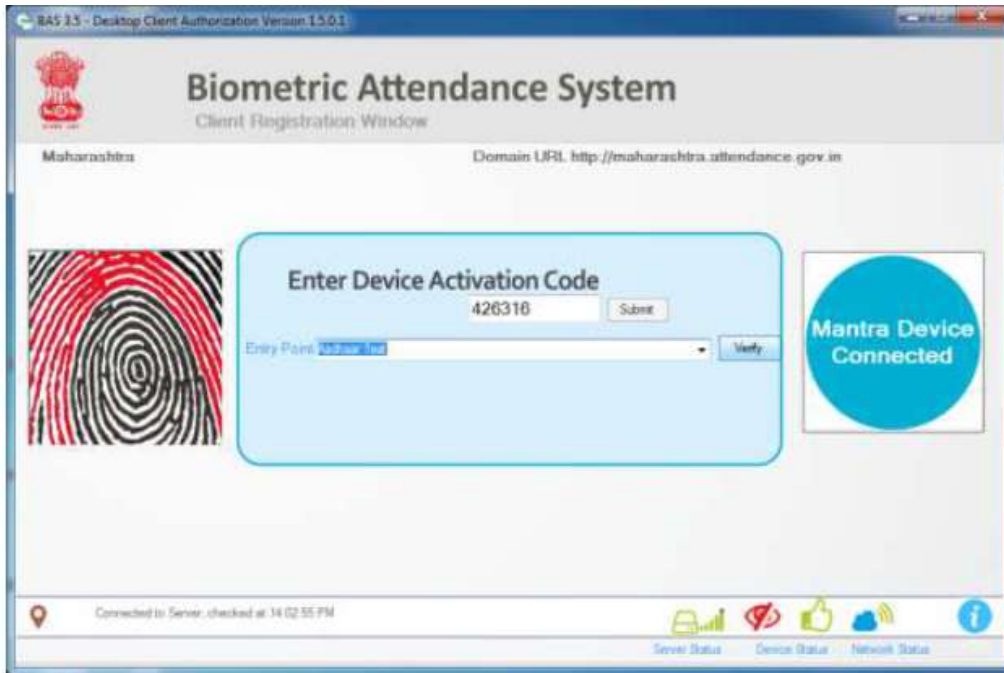


The application will open and launch the domain selection window.

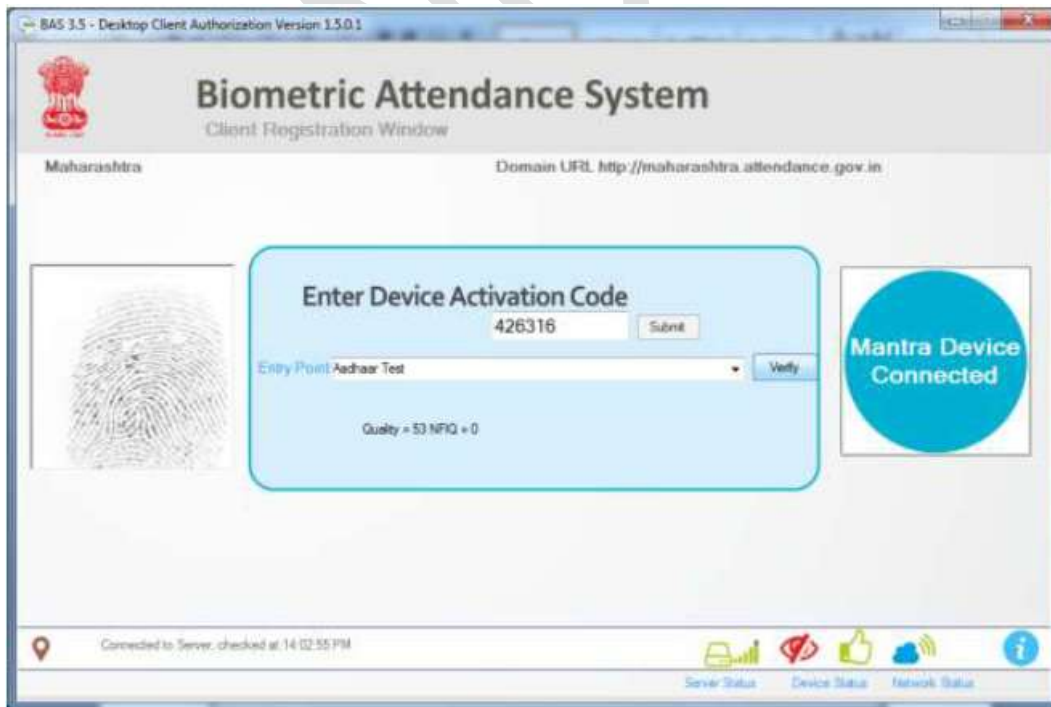
Select the domain and application name for which the application has to be configured, if you are unsure of the domain please get in touch with the nodal officer/technical co-coordinator.



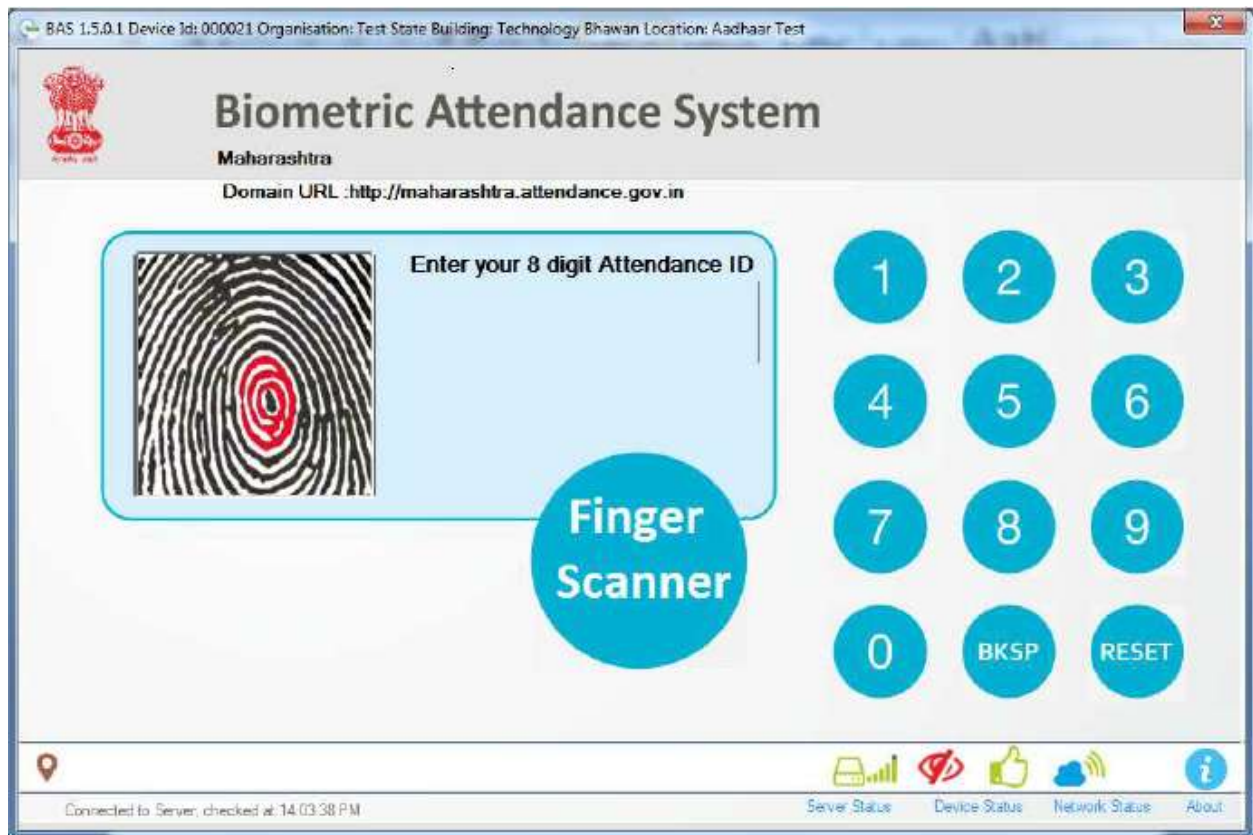
After the domain is selected the application will ask for Activation code. Enter the Device Activation code and press the Submit button, upon validation of the code, it will ask you to select Entry Point/Device Location (location where the device will be installed).



After Selecting the Entry Point hit the verify button and provide your biometric for authentication. Only successful authentication will activate the client.



After the client is authorized restart the client and you can use for marking your attendance.



How to Uninstall the AEBAS Application

- 1) If you want to uninstall AEBAS application from System, Open control panel select the Aadhaar Enabled Biometric Attendance System and click the Uninstall Tab.



- 2) AEBAS Application Shortcut created on your System Desktop. "Uninstall Biometric Attendance System" Click on that shortcut Icon...



- 3) You can modify, change or remove your installed AEBAS Application by execute setup file again and click next button to open maintenance form and click next...

